

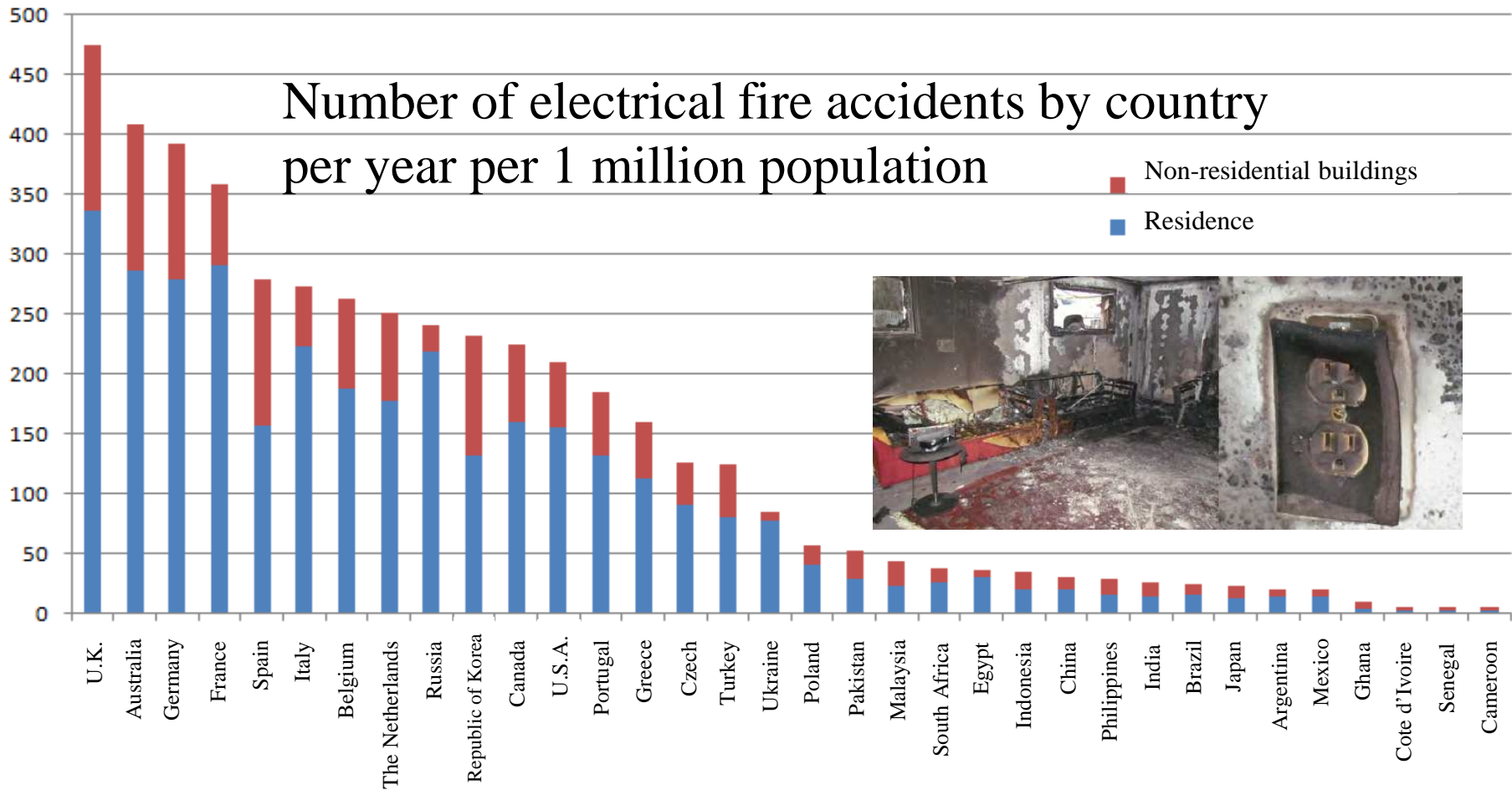
Electricity Disasters and Roles of Electrical Safety Inspection Associations in Japan

Michio Abe

Forum of Electrical Safety Inspection Associations, Japan

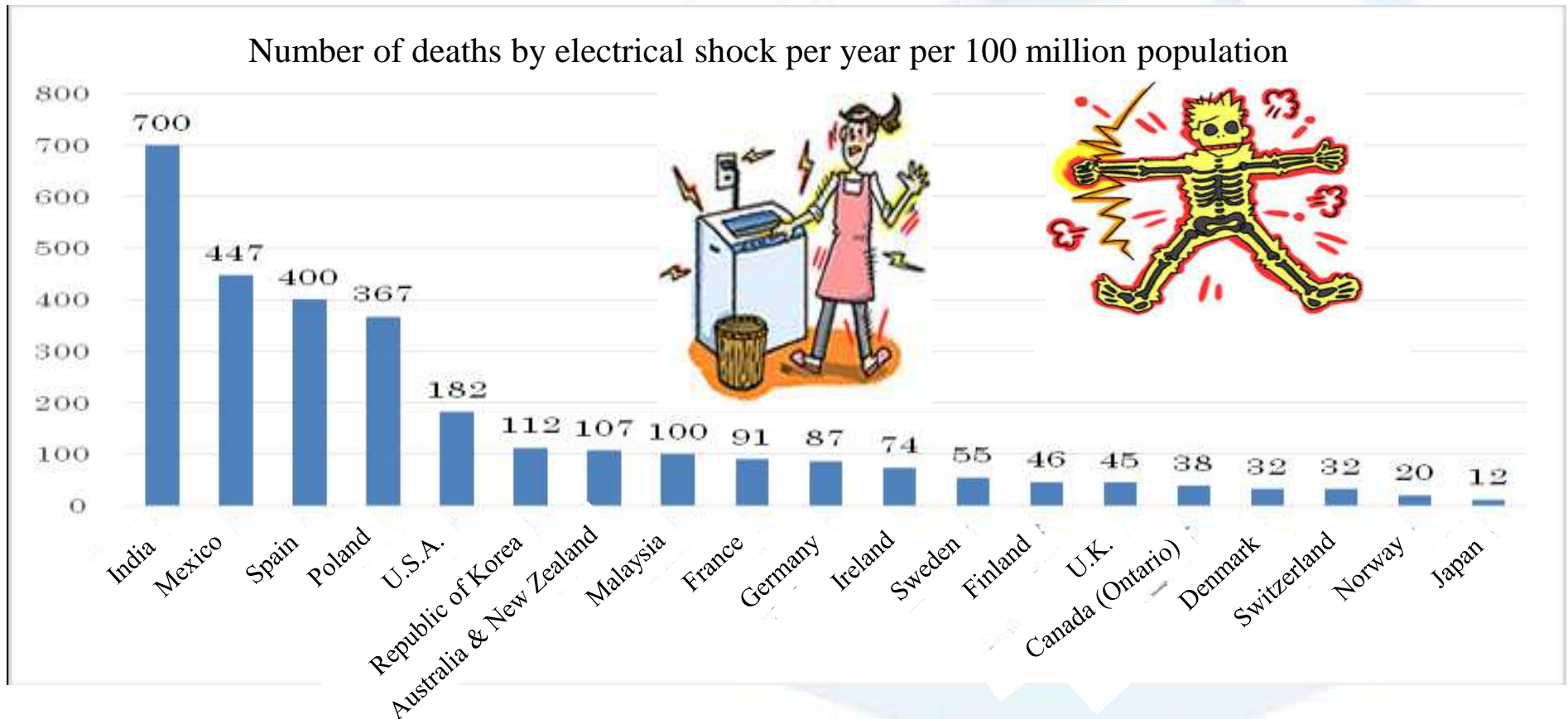
Overview of electricity accidents

(1) Electrical fire accidents (Source: European Copper Institute)



(2) Number of deaths by electrical shock

Official records by country



Yearly transition of number of deaths by electrical shock in Japan
 (Source: National Institute of Occupational Safety and Health, Japan)



Primary services of Electrical Safety Inspection Associations in Japan

(1) Survey/diagnosis service

Conduct periodic door-to-door surveys and diagnoses on electrical safety at general households, shops, etc. on behalf of electric power companies

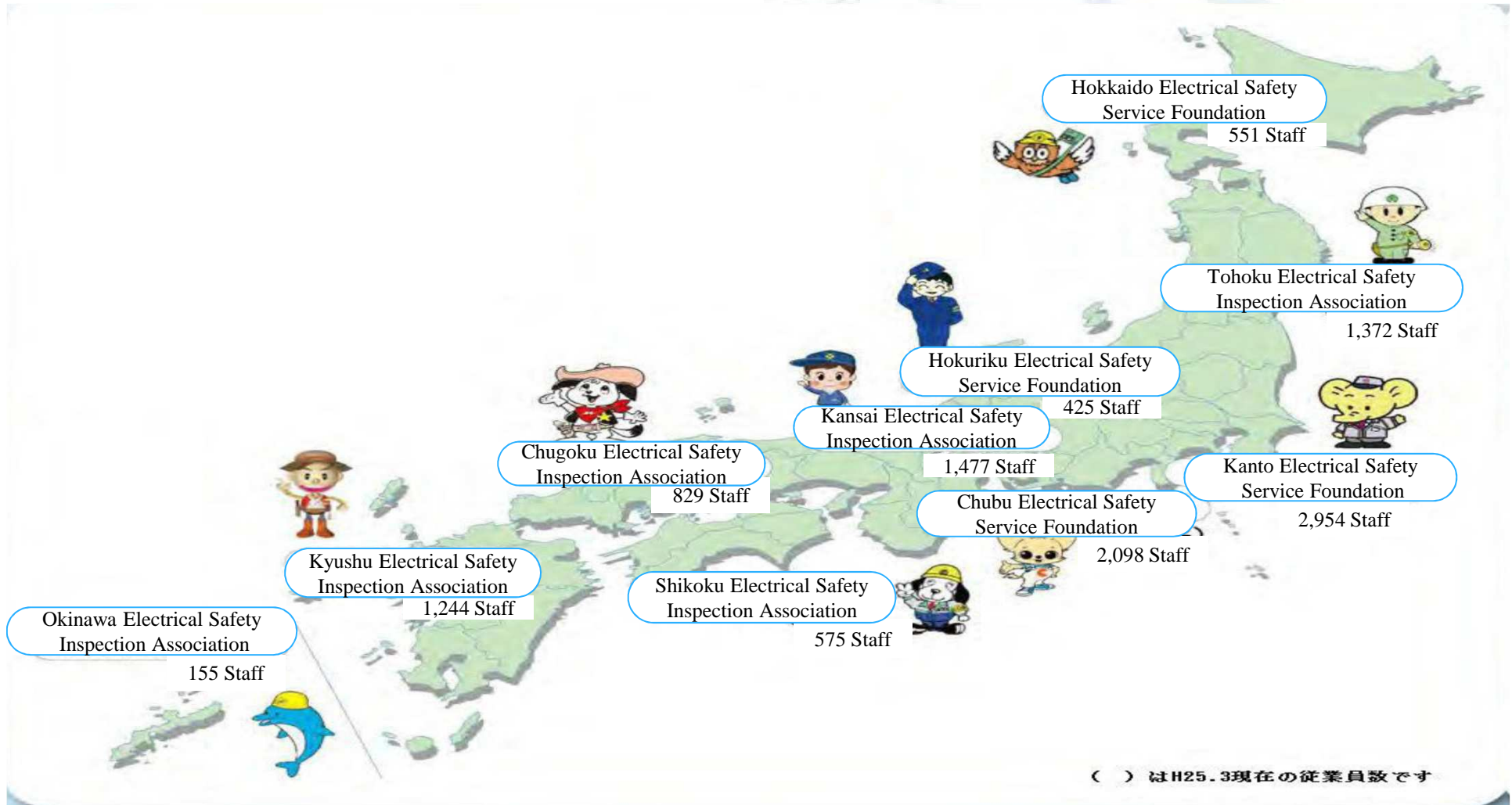
(2) Safety management service

Conduct safety management for electrical equipment of buildings, factories, etc. on behalf of equipment owners/operators

(3) Public relations service

Public relations (communication) including educational and public awareness activities on electrical safety, energy-saving, etc.

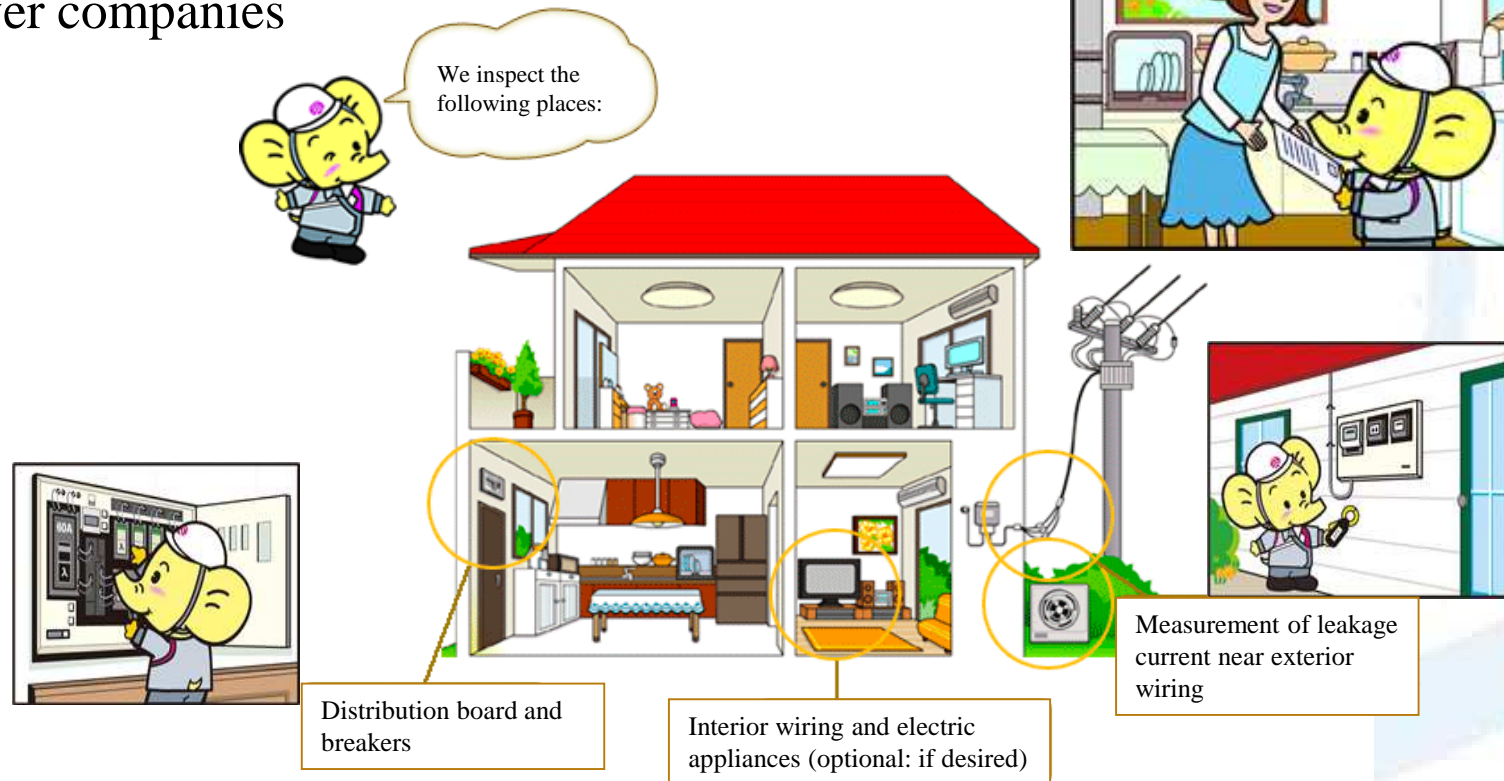
Locations of Electrical Safety Inspection Associations in Japan



Electrical safety survey/diagnosis for general households

Periodic survey

Conducted on behalf of electric
power companies

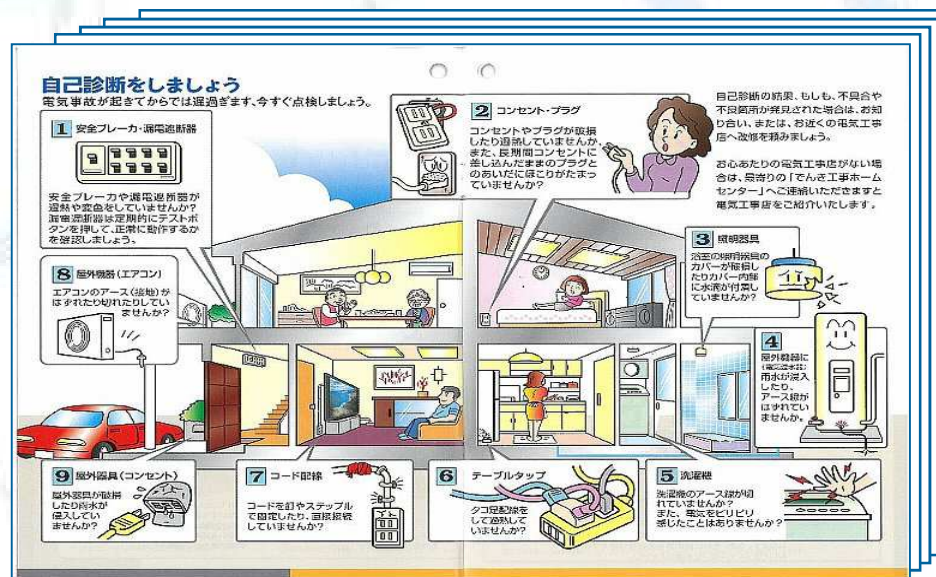


Public-awareness activity on electrical safety during periodic survey

Using Electrical Safety Handbook, each personnel conducts public-awareness activity during visit to households by giving advice and explanation on how to use electricity safely.

Standard Electrical Safety Handbook
 (“How to Use Electricity Safely”)

Example of content:
 “How to Inspect Your Electrical Equipment”



- Dangerous amateur work
- How to use electrical appliances properly
- If an earthquake occurs
- How to inspect your electrical equipment
- Earth leakage circuit breaker prevents electrical shock and fire accidents
- How to respond to electrical outage
- Information on Long-Term Use Consumer Products Safety Inspection Program
- Tips for economical and wise use of electricity
- Contacts for repair work

Electrical safety management service for buildings, factories, etc.



Monthly inspection



Annual inspection



Accident response



Testing service



Safety education

THANK YOU

MERCI - 감사합니다

